

# Ministry of Forests Invasive Plant Update



Ministry of  
Forests

## ISCMV 2023 Fall Forum

Derek Hogan, P.Ag.

Invasive Plant Specialist – Partnerships & Projects

# Indigenous Acknowledgement

I respectfully acknowledge the First Nations and Indigenous Communities whose territorial lands and waters we all live, work, and raise our families on throughout BC



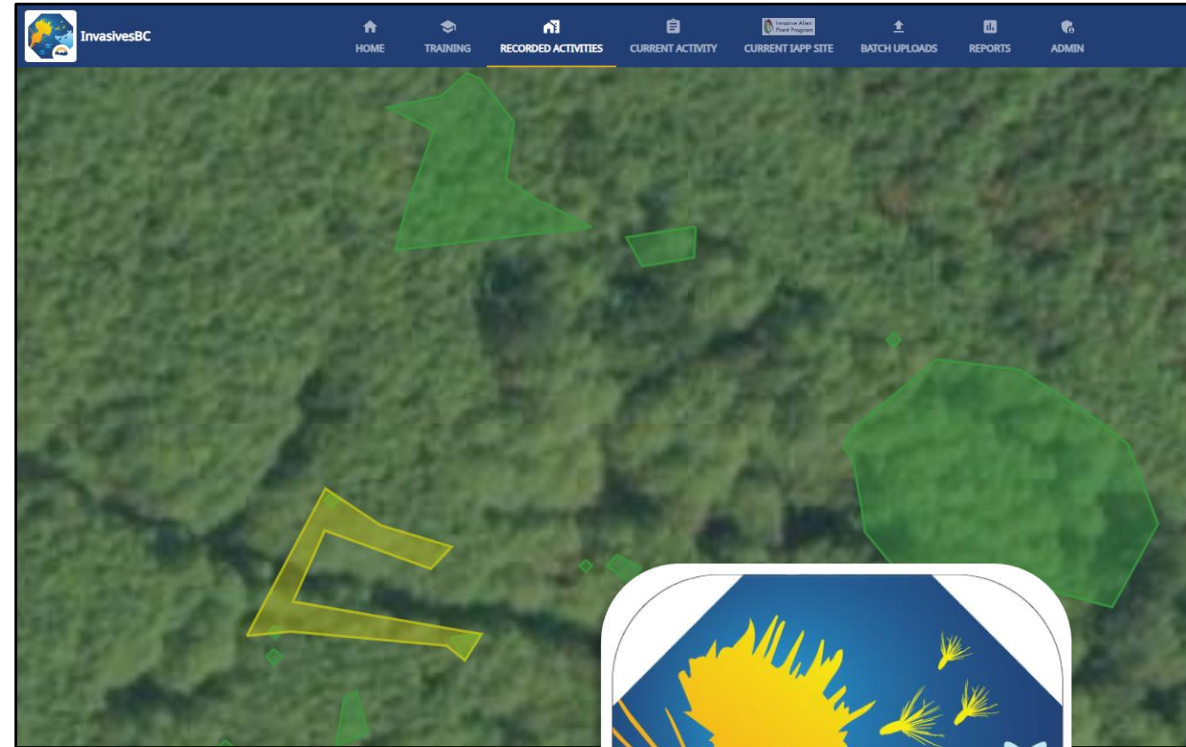


## AGENDA

- InvasivesBC Update
- Local Priorities for Inventory
- Biocontrol Update
- Pest Management Plan Update

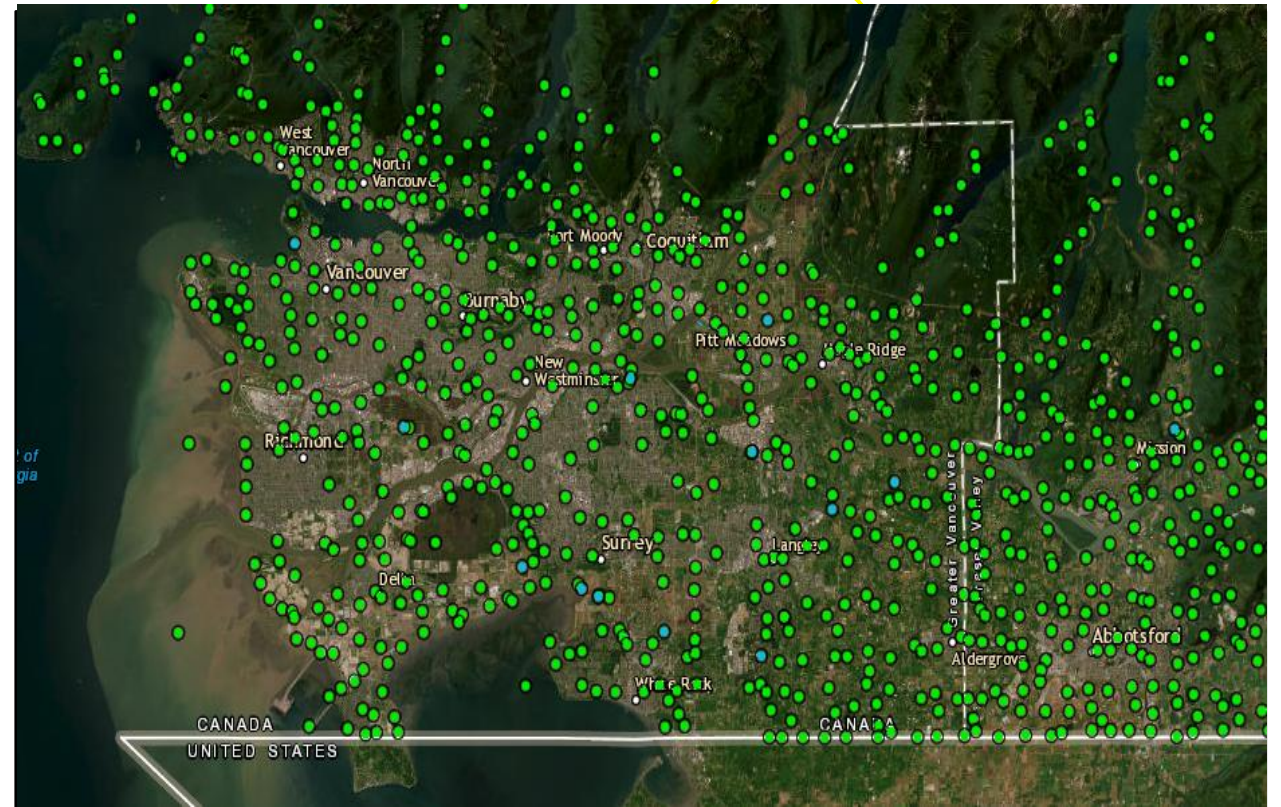
## OVERVIEW

- NEW database launched June 2023
- IAPP records still available
- Includes aquatic and terrestrial IP records
- Polygon based mapping system
- Over 350 users and 15,000 records
- Encourage all land-managers to use
- Support available for new users – [InvasivesBC@gov.bc.ca](mailto:InvasivesBC@gov.bc.ca)



## RECENT AND UPCOMING

- Mobile app for direct data collection
- IVMA/ISCBC hosted webinar
- Frequently Asked Questions doc
- Training videos
- NEW public facing map
- Will eventually include animals
- Ongoing performance enhancements



[Invasivesbc.gov.bc.ca/home/landing](https://invasivesbc.gov.bc.ca/home/landing)

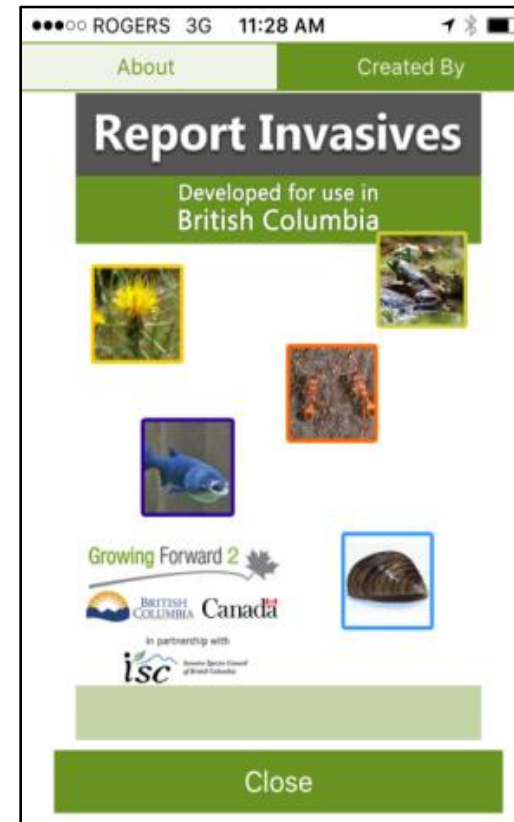
# Reporting

## Report Invasives BC

- Smartphone app
- Online Form



[www2.gov.bc.ca/invasive-species](http://www2.gov.bc.ca/invasive-species)



# Inventory Priorities

## Japanese Butterbur (*Petasites japonicus*)

- Provincial Containment Species
- Priority for control – Top 25
- High impact to riparian areas
  - Shades out understory vegetation
  - Creates bare ground – erosion
  - Limited control options
- Under-mapped in LM



# Inventory Priorities

## Japanese Butterbur (*Petasites japonicus*)



## Purple Butterbur (*Petasites hybridus*)



### INVASIVE SPECIES ALERT!

#### Japanese butterbur (*Petasites japonicus*)

##### HAVE YOU SEEN THIS PLANT?

###### DESCRIPTION

- Native range is China, Japan, and the Korean peninsula;
- Perennial; plants can reach up to 2 meters tall.
- Flower stalks emerge prior to leaf growth. Flowers are white to pale yellow, and plants are dioecious.
- Thick, succulent leaf stalks, sparsely coated with bristly hairs grow up to 1.5 meters tall, emerging directly from the ground in the spring.
- Leaves are kidney to near heart shaped, growing 0.3 – 1.5 meters wide. Margins are toothed and leaf bottoms can feature thick to sparse woolly, white hairs.
- Seeds (achene) are ribbed with a tuft of white bristles on the end.
- Roots are rhizomes and readily break apart creating new plants.
- Leaf stems (Fuki) are edible if prepared correctly however, the plant contains a number of poisonous compounds.



Other Common Names:  
-Giant Butterbur  
-Japanese Sweet Coltsfoot  
-Fuki

**PRIMARY THREATS:** Japanese butterbur outcompetes native plants and is a particular threat to areas near water. It is a large plant, that is difficult to control, uses a lot of nutrients and water which dominates a site.

##### BIOLOGY & SPREAD

- While Japanese butterbur produces seed and may reproduce from them, root fragmentation and site expansion from roots are the most common method of spread.
- In creeks, as banks erode, root fragments are carried downstream and re-establish, thus creating new butterbur stands.
- Garden waste and plant trading are common methods of dispersal.
- Since the plant flowers prior to leaf production, effective treatments must occur early in the year.

For more information:

<https://www2.gov.bc.ca/gov/content/environment/plants-animals-ecosystems/invasive-species/priority-species/priority-plants>



August 2023

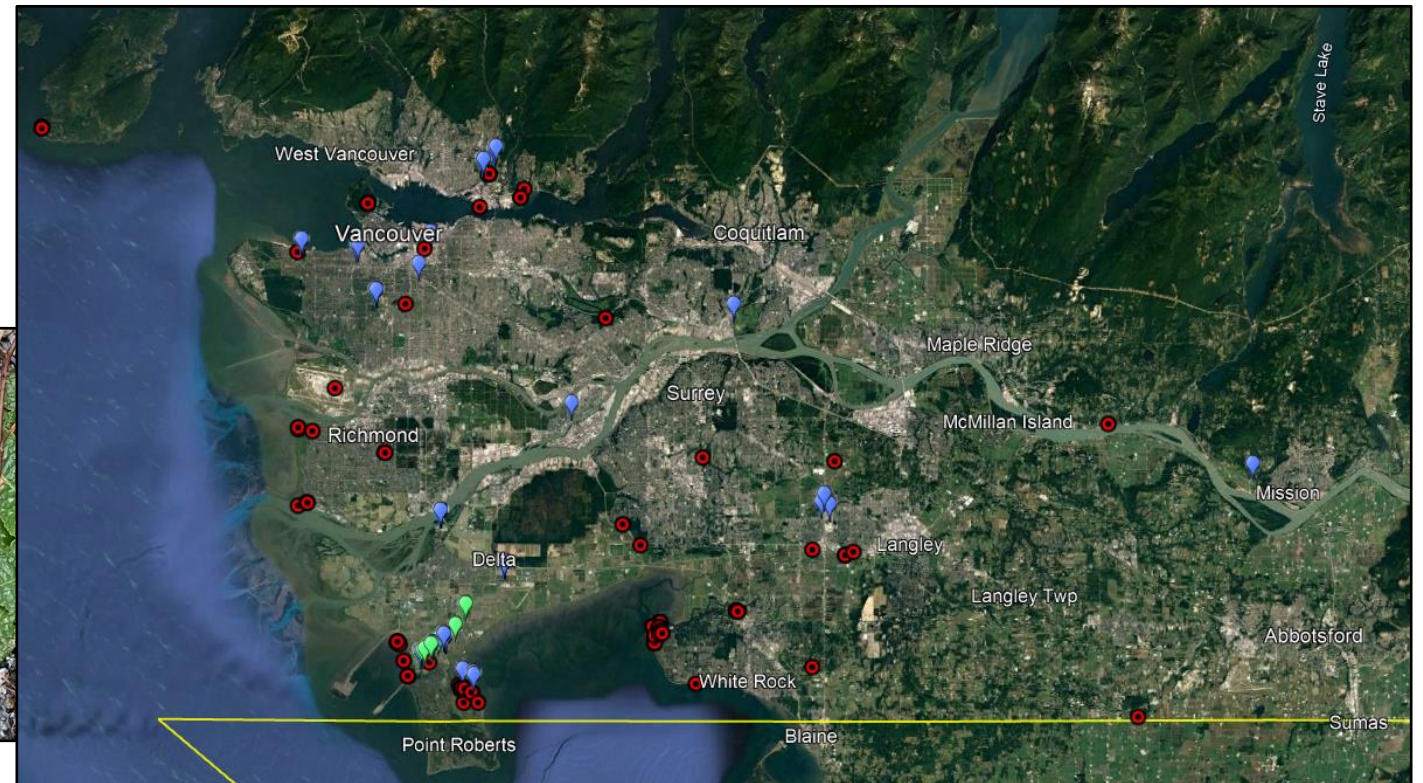
<https://www2.gov.bc.ca/gov/content/environment/plants-animals-ecosystems/invasive-species/priority-species/priority-plants>



# Inventory Priorities

## Fuller's Teasel (*Dipsacus fullonum*)

- Provincial Containment Species
- Priority for control - Top 25
- Weed Alert available
- Under-mapped in LM



# Inventory Priorities

## Princess Tree (*Paulownia tomentosa*)

- Available for sale and promoted on south coast
- Current distribution and impacts unknown



# Inventory Priorities

## Princess Tree

(*Paulownia tomentosa*)



## Catalpa

(*Catalpa* spp.)



# Inventory Priorities

## Tree of Heaven (*Ailanthus altissima*)

- Inventory needed for realistic, effective mgmt. strategy
- Proactive approach in anticipation of Spotted lanternfly
- Look-alikes → black walnut; sumac



## Black walnut



## Sumac



# Biocontrol Agents

## Three new primary agents released in 2023:



**Russian Olive**

Leaf-galling mite  
Released at two locations



**Garlic Mustard**

Root-mining weevil  
Released at four locations



**Oxeye Daisy**

Root-mining moth  
Released at two locations

# Pest Management Plan



Ministry of  
Forests

## NEW Southern & Coastal BC PMP

- Replacing three existing PMPs
  - South Coastal (expires April 2024)
  - Southern Interior (expires April 2024)
  - South Coastal Mainland (expires 2026)
- Indigenous consultation already started
- Public consultation soon – direct LG/newspaper



# Pest Management Plan



Ministry of  
Forests

[www2.gov.bc.ca/gov/content/environment/plants-animals-ecosystems/invasive-species/integrated-pest-management/pmp-pup](http://www2.gov.bc.ca/gov/content/environment/plants-animals-ecosystems/invasive-species/integrated-pest-management/pmp-pup)

- Priority invasive species
- Inter-Ministry Invasive Species Working Group
- Invasive species management in B.C.  
Early detection and rapid response (EDRR)
- Integrated Pest Management
  - Pest Management Plans and Pesticide Use Permits**
- InvasivesBC database  
Reporting invasive species  
Resources and publications

## Invasive Plant Pest Management Plans and Pesticide Use Permits

Pest Management Plans and Pesticide Use Permits provide direction and support for the use of [integrated pest management](#) activities to control invasive species under the Integrated Pest Management Act and Regulation.

**On this page:**

- [Pest Management Plans](#)
- [Pesticide Use Permits](#)

### Pest Management Plans

Pest Management Plans (PMPs) outline an integrated pest management approach for the control of invasive plants on provincial public land, and includes ~~prevention strategies, manual/mechanical treatment methods,~~ biological and cultural control methods, and chemical control methods.

**Southern and Coastal B.C. - Draft Under Consultation**

- [DRAFT Invasive Plant Pest Management Plan for Provincial Public \(Crown\) Lands in Southern and Coastal British Columbia \(FOR-SBC-PMP-2024-2029\)](#) (PDF, 1.4MB)

**Southern Interior**

- [Invasive Plant Pest Management Plan for Provincial Public Lands within the Southern Interior \(PMP #402-0678-19-24\)](#) (PDF, 2MB)

**Central and Northern**

- [Invasive Plant Pest Management Plan for Provincial Public Lands within Central and Northern B.C. #FLNR C&N B.C. 402-0680-20/25](#) (PDF, 1MB)


**South Coastal**

- [Invasive Plant Pest Management Plan for Provincial Public Lands within the South Coast \(PMP#402-0677-19-24\)](#) (PDF, 3MB)
- [South Coastal Plan Area Map](#) (PDF, 3MB)

**South Coastal Mainland**

- [Invasive Plant Pest Management Plan for Provincial Public Lands within the South Coastal Mainland of B.C.](#) (PDF, 3MB)

### Report invasive species sightings



Report invasive species before they cause harm.

Invasive species are plants and animals not naturally found in B.C. that can potentially harm the province's natural environment or adversely affect people's health.

- [Report invasive species](#)

### Related links

- [Invasive Species - Environmental Reporting BC](#)
- [Invasive Species Council of B.C.](#)
- [Pesticides and pest management](#)
- [Authorization to sell or use pesticides](#)



## DRAFT Invasive Plant Pest Management Plan for Provincial Public (Crown) Lands in Southern and Coastal British Columbia



Area of Proposed PMP Boundary

BC Ministry of Forests  
Application Number: FOR-SBC-PMP-2024-2029  
September 20, 2023

1 | Page

# *Thank You!*

**Derek Hogan, P.Ag.**

Invasive Plant Specialist – Partnerships & Projects  
BC Ministry of Forests

[Derek.Hogan@gov.bc.ca](mailto:Derek.Hogan@gov.bc.ca)

(250) 739-8248